



Webinar Series

Washington Parenting Student Success Learning Series

March 31, 2026



Washington Parenting Student Success Learning Series

PRE-WEBINAR: Advancing Parenting Student Success

🕒 February 6, 2026 – see link in chat

SESSION 1: How can data collection about parenting students improve experiences and success?

🕒 March 10, 2026 – see link in chat

SESSION 2: What can campuses do to advance parenting student success?

🕒 TODAY, 10:00-11:30 PST

→ Explore campus practices and policies that can support parenting students' experiences and success

SESSION 3: How can communities work together to advance parents' access and success?

🕒 Tuesday, May 5, 2026 10:00-11:30 PST

→ Explore how communities – cross-sector organizations, campuses, and other partners – can support parents' access and success.

Welcome

Introducing the Core Collaborators

- **Washington Student Achievement Council (WSAC):**
 - Ami Magisos and Abby Chien
- **Communities For Our Colleges (C4C):**
 - Xochilt Lopez, Gabby Fitz and Fernando Mejia Ledesma
- **Washington Campus Children's Center Coalition (WCCCC):**
 - Ann Slaughter (Pierce College)
 - Casey Lalonde (The Evergreen State College)
- **Washington State Board for Community and Technical Colleges (SBCTC)**
 - Jennifer Dellinger

Why Washinton Parenting Students?

18% of students

Disproportionately

- Female (75%)
- Students of color
- Low income (62%)

High rates of basic needs insecurity:

- 68% Food/Housing insecurity
- 3 in 4 struggle to have childcare

Strategy Priorities:

- Making parenting students visible
- Promote strong campus practices
- Support development of community partnerships

Opportunities:

- Learn
- Build network
- Recommendations and support



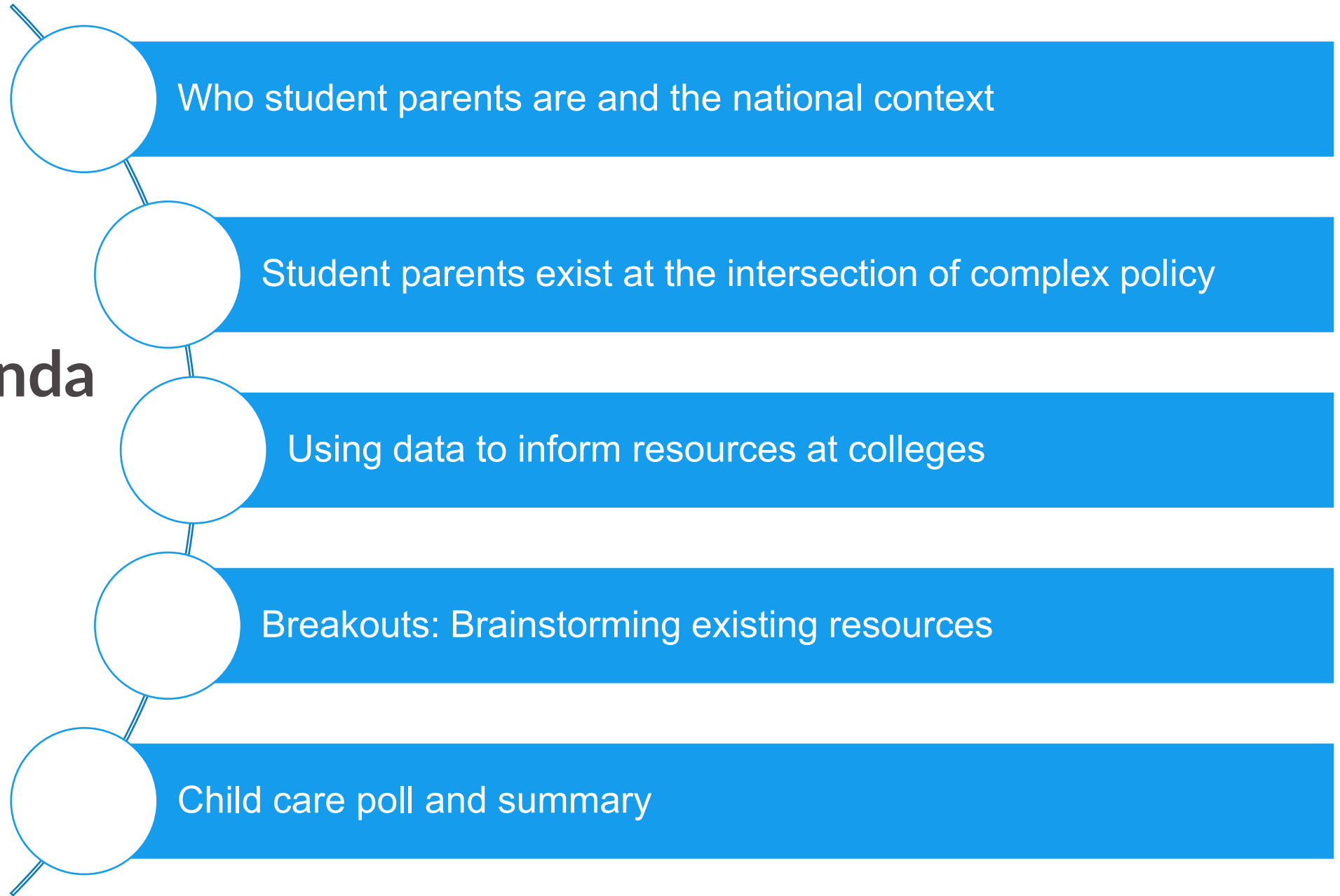
Kate Westaby



Kimberly Salazar

*The information shared also builds on the work of additional Data-to-Action Team members:
urban.org/projects/data-action-campaign-parenting-students*

Today's Agenda



Who parenting students are and a review of the national context

Parenting students are a key population across the nation

18% or 3.14 million
undergraduate community
college students are student parents

73%
of student parents at baccalaureate institutions
have community or technical college experience

LEARN MORE

[STUDENTPARENTACTION.ORG/
RESOURCES/DATAINSIGHTS](https://STUDENTPARENTACTION.ORG/RESOURCES/DATAINSIGHTS)



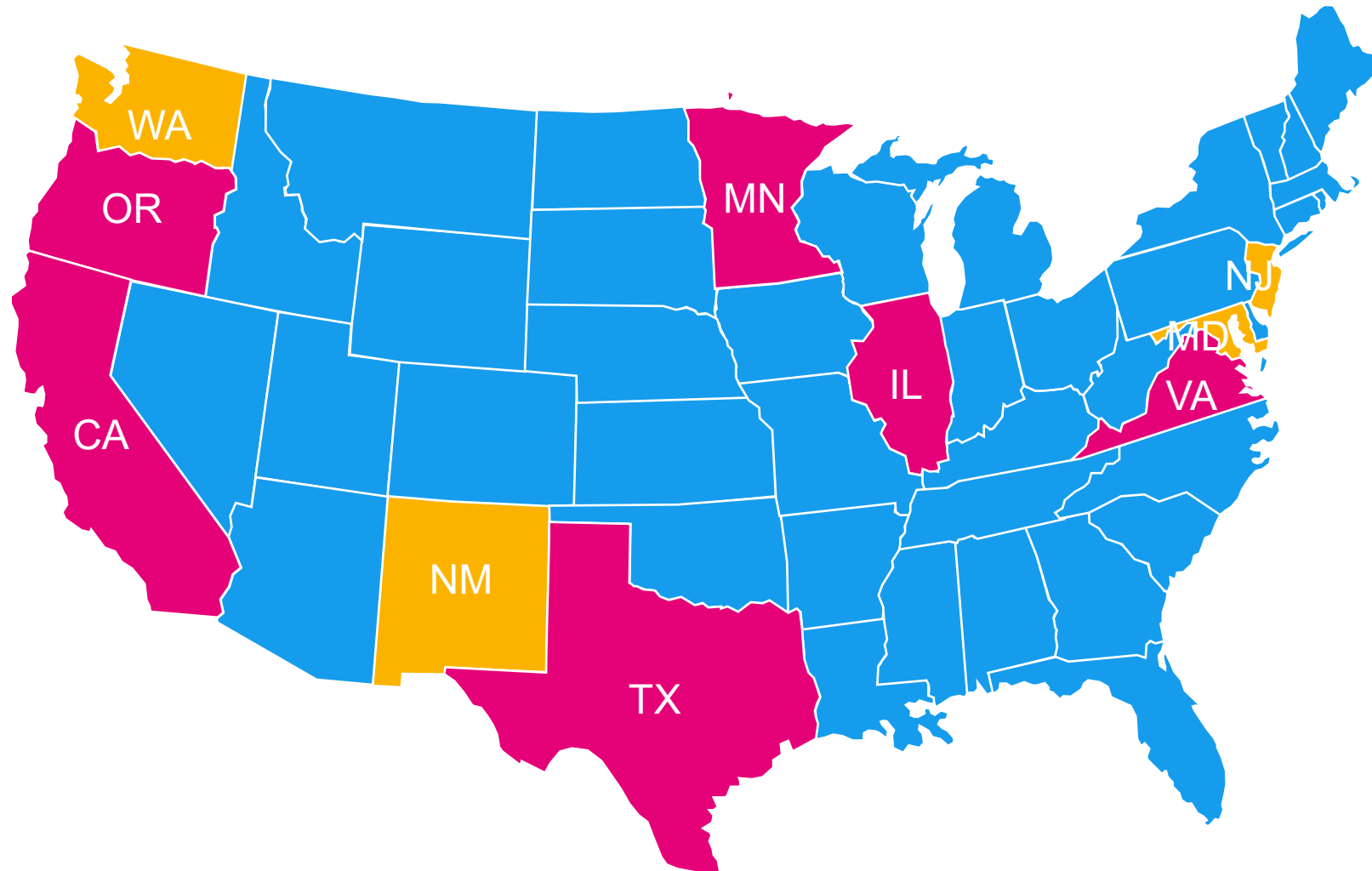
Source: National Postsecondary Student Aid Study 2020.

Dundar, Afet, Theresa Anderson, and Kate Westaby. 2024. Where Do Student Parents Attend College? A Snapshot of Student-Parent Attendance Patterns Using 2020 Data. n.p.: Student-Parent Action through Research Knowledge (SPARK) Collaborative.

Parenting students are strong but face completion gaps

- Had GPAs (3.2) **similar to** nonparenting classmates
- Only 17% of SPs complete a degree in 6 years, compared to 50% of nonparenting students
 - 55% less likely to complete, after controlling for other differences
- Most are juggling caregiving, school, *and* work:
 - 73% had a non-work-study job
 - Worked **36** hours per week (on average)

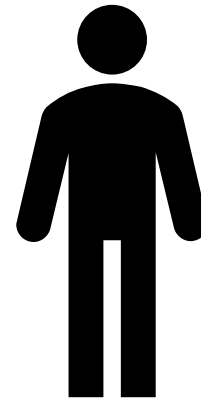
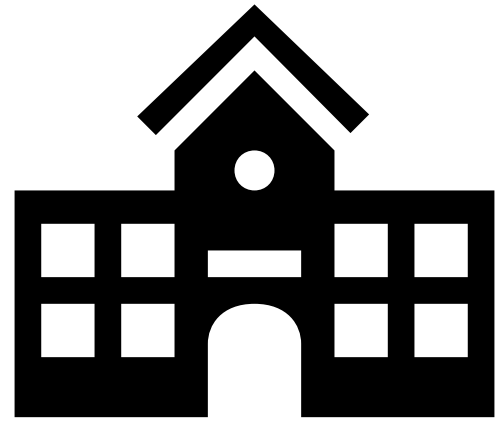
A growing number of states **require** student parent data collection and data collection is **being legislatively proposed** in others

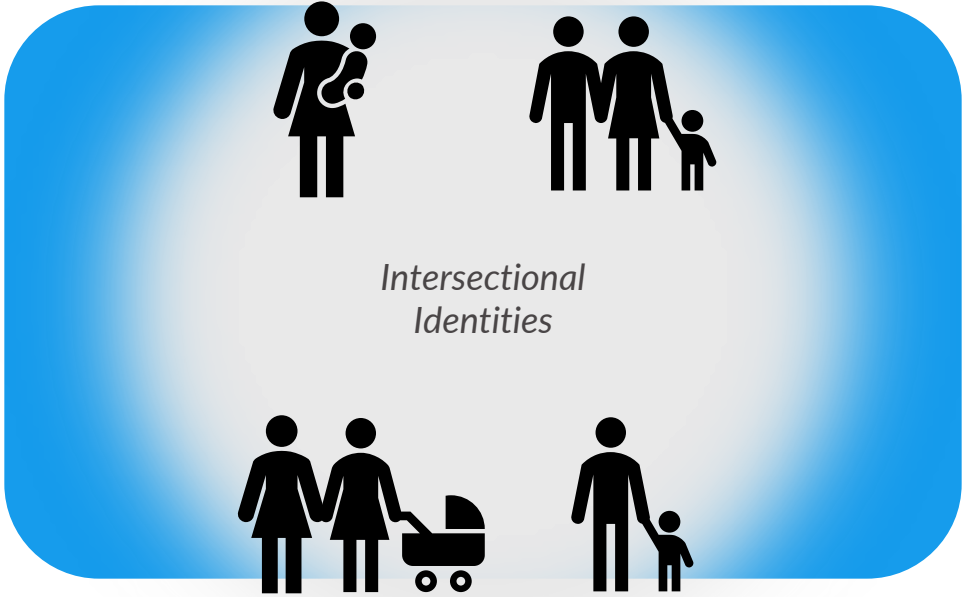


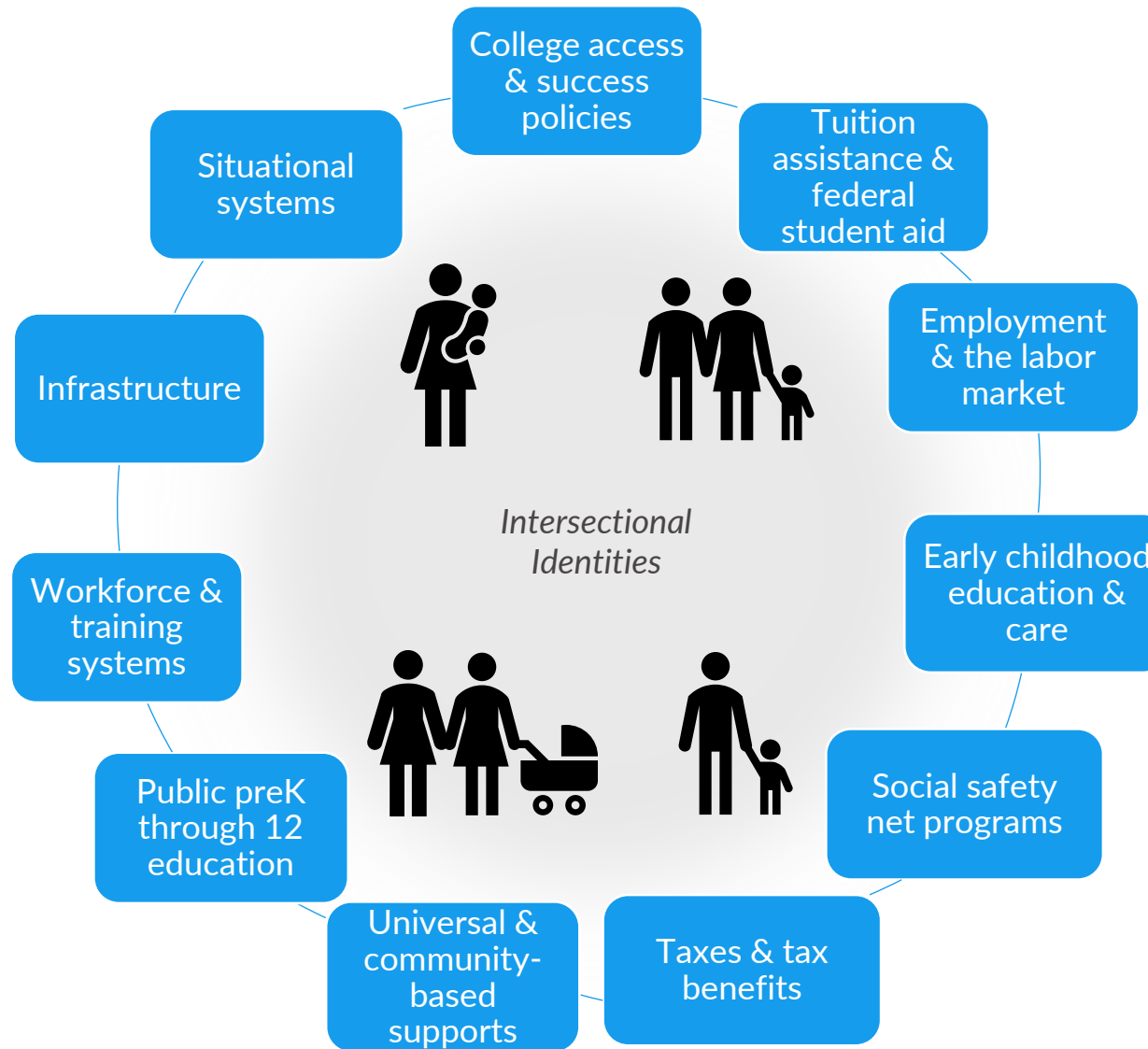
Policy Landscape

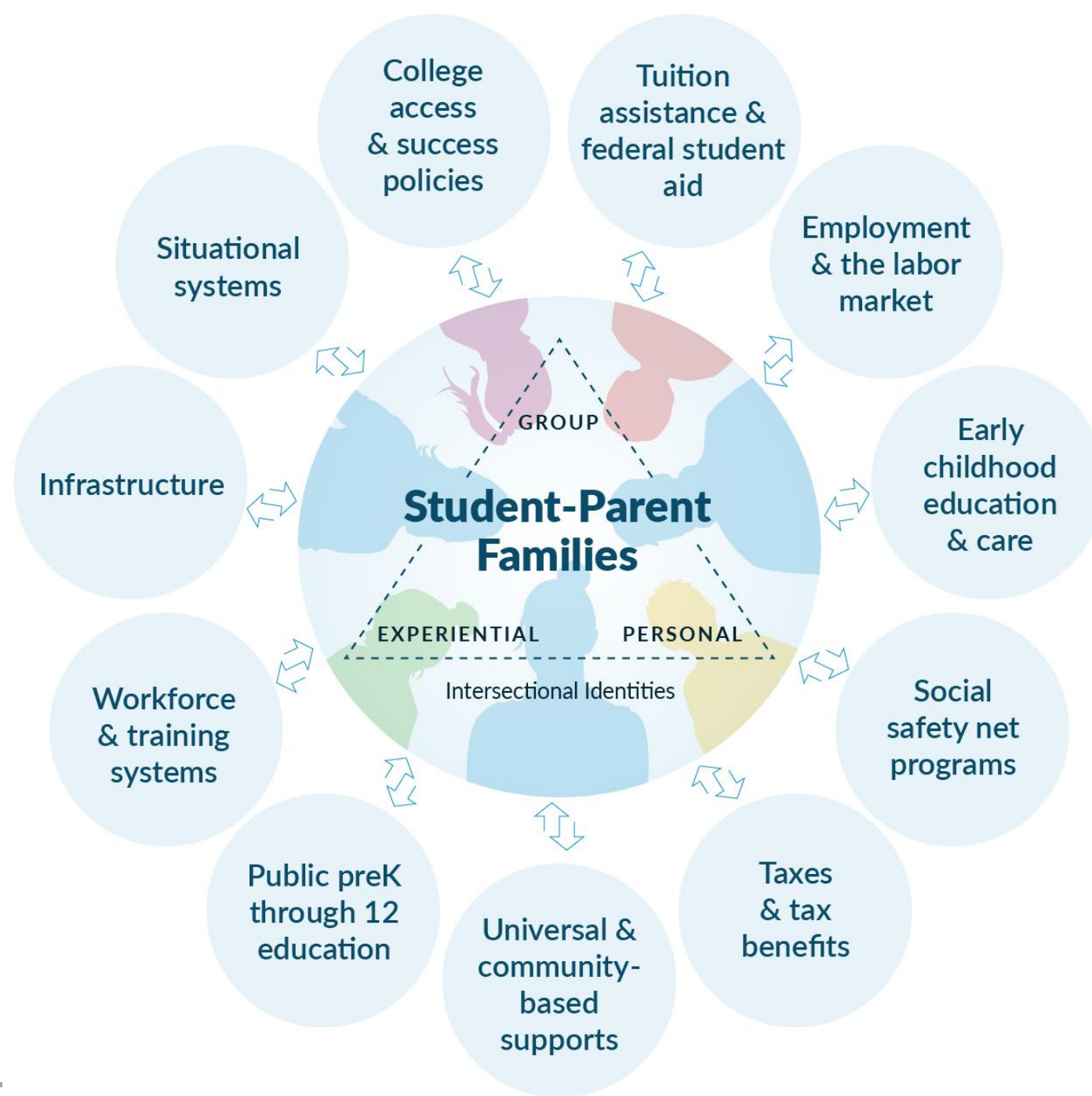
- Additional features of student parent data collection legislation
 - OR's two required questions include info about household structure and child's age ranges
 - CA, MN, and TX require priority registration
 - CA requires website for student parents listing resources
 - CA requires financial aid adjustments
 - TX banned discrimination against students due to pregnancy or parental status
 - MN requires each college to have a student parent policy
 - TX and MN require institutions to have a student parent navigator or liaison
- CCAMPIS
 - Another competition slated for June/July

**Student parents exist at a
complex policy intersection**









College access & success policies

- Recruitment & outreach
- Orientation & registration
- Class scheduling
- Academic, basic needs, & legal supports
- Health & mental health services offered by colleges
- On-campus dining & college-provided food supports
- Student-parent data collection
- Title IX
- The Civil Rights Act
- ADA protections
- Family-friendly campuses
 - On-campus family housing
 - Inclusive classroom learning experiences
 - Student-parent-specific services, spaces, & policies
- Federal policies on minors on campus
- Higher education funding
- College accountability policies & practices
 - Accreditation bodies
 - Regulations on for-profit colleges

Situational systems

- Child welfare & foster care system
- Child support system
- Fatherhood programs
- Veterans' services/military (and spousal) benefits
- Immigration system & services
- Justice system
- Additional support for people with disabilities & neurodiversity
- Teen & young parent programs
- Tribal policies

Infrastructure

- Technology infrastructure & supports
- Transportation
- Housing & rental market
- Health infrastructure
- Mental health infrastructure
- Data systems (state or federal)

Workforce & training systems

- Individual Training Accounts
- American Job Centers/workforce development system
- SNAP E&T
- Non-credit-bearing job training

Public preK through 12 education

- Local & state preK & 3K policies
- Elementary & secondary education quality
- School logistics, including hours, location, & transportation
- School choice/out-of-district attendance policies
- School expectations of parent engagement/involvement
- Health & mental health services through schools/districts
- IEP & special needs policies
- After-school program offered through schools/districts
- Postsecondary education counseling/ navigation services
- Services for pregnant/parenting high school students

Universal & community-based basic need supports

- Stimulus payments
- CARES Act funding
- Private lending, credit, debt, & bankruptcy services
- Non-profit organization supports

Tuition assistance & federal student aid

- Pell Grants
- Scholarships
- FAFSA & EFC, including child care allowances
- Federally subsidized loans
- Private loans
- Work-study
- Cost of higher education and return-on-investment
- Student debt & loan cancellation or forgiveness
- College income share or outcome agreements

Employment & the labor market

- Nondiscrimination policies
- Minimum wage & wage equity
- Family leave
- Unemployment Insurance
- Employer tuition support or training
- Work-based learning (paid & unpaid)
- Predictable & flexible hours
- Remote work opportunities & policies

Early childhood education & care

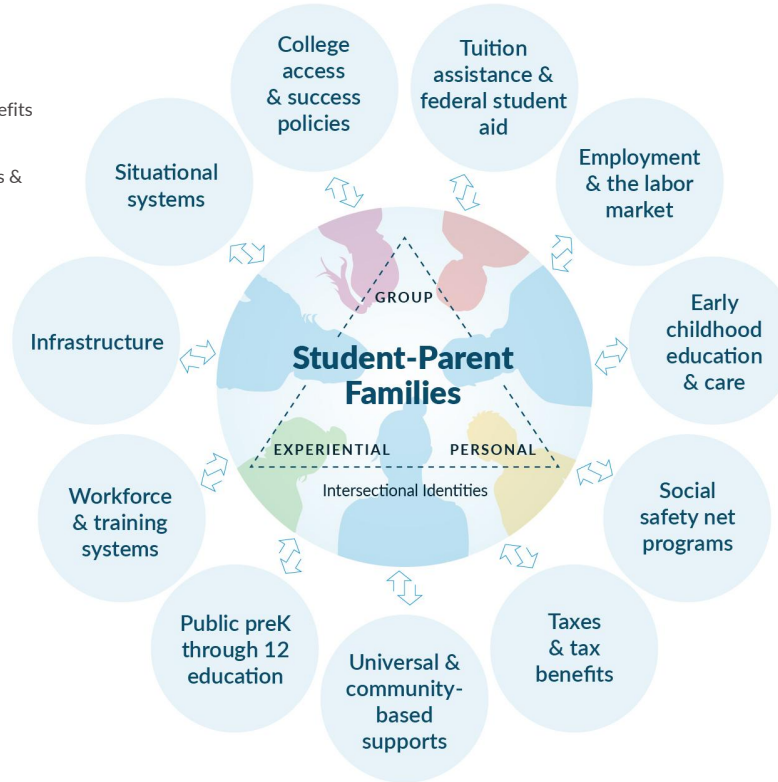
- CCDF subsidies
- Head Start/Early Head Start
- PreK & 3K education & care
- College/university child care (CCAMPIS)
- College/university child care (self-funded, private, & partnerships)
- After-school care
- Child care supply/availability
- Child care quality issues
- Child care on demand, drop-in, & back-up care
- Resource & referral centers

Social safety net programs

- TANF
- SNAP, WIC, & FRPL
- Public/Subsidized housing
- Medicaid & CHIP
- Heat & energy assistance
- SSI/SSDI (adult & child)

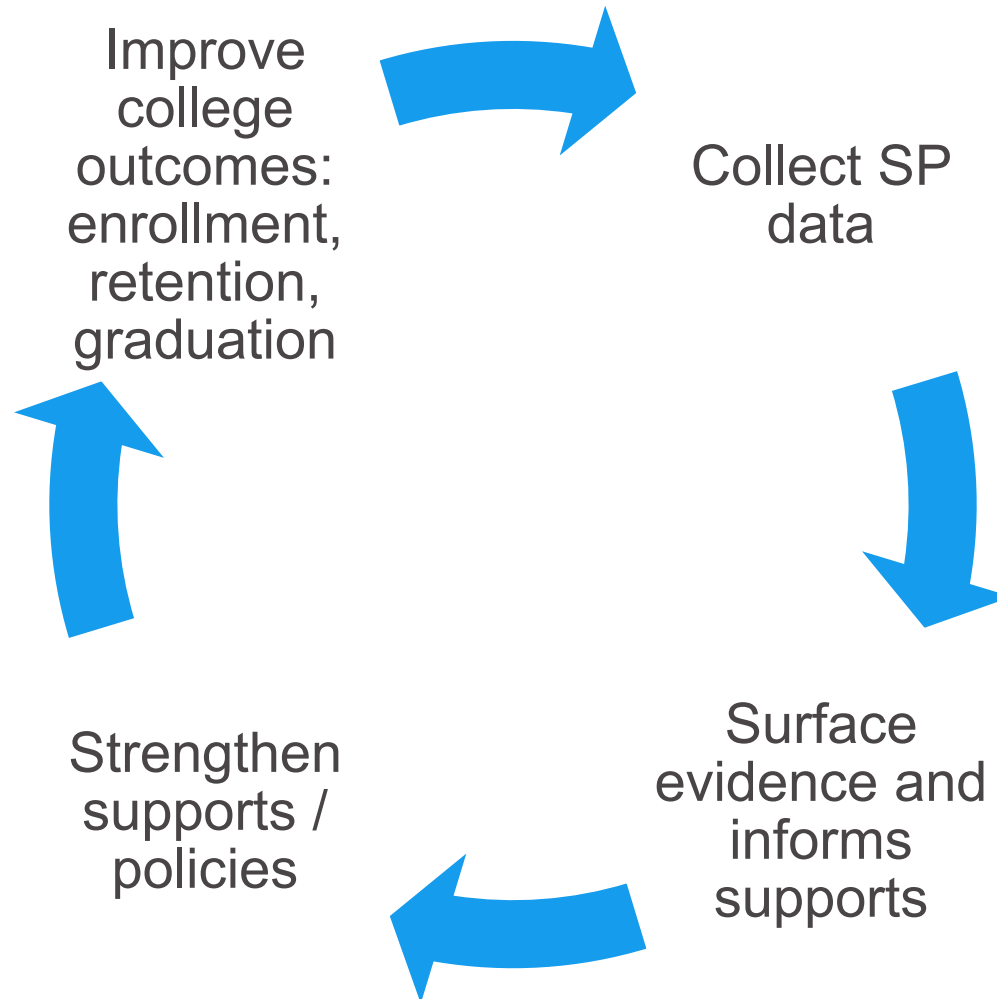
Taxes & tax benefits

- Income taxes
- Tax credits for families with children
- Higher education tax benefits for students
- Affordable tax software & preparation



With this framework in mind, what does support look like in practice?

Putting data to work - Data makes this visible. Supports make it possible.



What SP support looks like in practice: Faculty Support

Faculty are often a student parent's first point of contact and one of the most powerful levers for change.

Action	Institution	What they did
Syllabus Language	Cal Poly, San Luis Obispo	The Center for Teaching, Learning & Technology partnered w/ the Students with Dependents Program to develop ready-to-use syllabus statements faculty can adopt
Professional Development	Bakersfield College	Offers faculty workshops, SP data presentations, & practical guidance to help instructors understand & respond to student parent needs

What SP support looks like in practice: Addressing Policies

Institutions have the power – and responsibility – to codify inclusion.

“When I arrived at LBCC as vice president of student services, I noticed signs with a stroller and a bar through it saying “No children allowed.”

We got that changed immediately.

That wasn't the message we wanted to send. At LBCC [Long Beach City College], we want student parents to know they are appreciated here, and so are their children.”

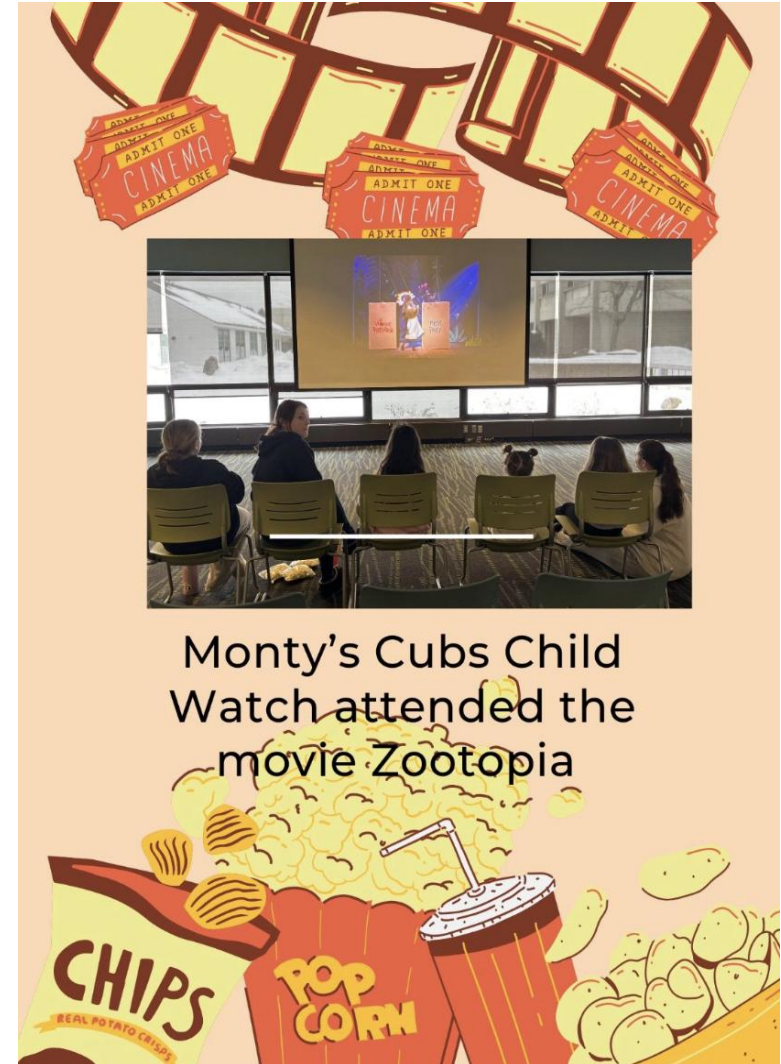
-Long Beach City College President
Mike Munoz

What SP support looks like in practice: Culture

Childcare is a big lift – but institutions are finding creative ways to carry it.



“Big shoutout to the “Child Watch” program provided by the Student Parent Resource Center! *My kids had school vacation this week and I was still able to attend my classes.* This is an amazing resource knowing my kids were cared for and I didn’t have to miss any class time!” ~Andrew Downey



What SP support looks like in practice: Basic Needs Support

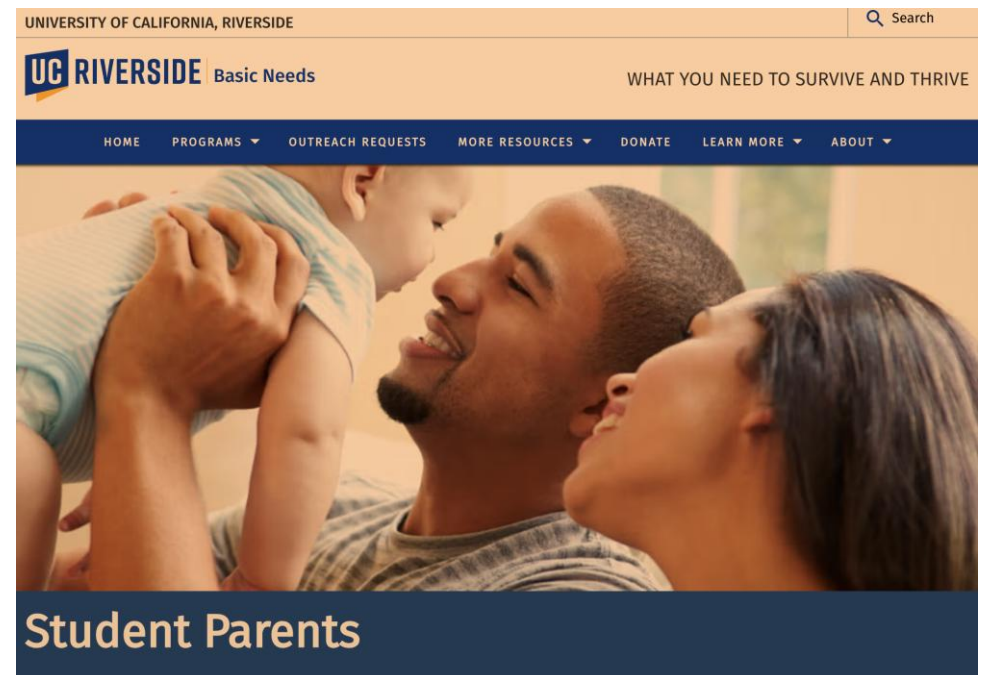
Basic needs are the foundation – and institutions are building it brick by brick!

— Sign Up for Basic Needs Student Parent Updates!

Fill out the following form in order to receive email updates for all things Basic Needs tailored to student parents!

[FORM](#)

- + Student Parent Closet Events
- + Basic Needs Diaper Bank
- + Diaper Bank of the Inland Empire
- + CalFresh
- + California Earned Income Tax Credit (CalEITC)
- + Young Child Tax Credit
- + California Special Supplemental Food Program for Women, Infants, and Children (WIC)
- + Additional Resources for Student Parents



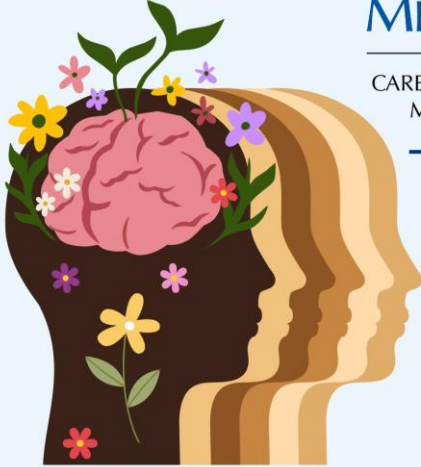
What SP support looks like in practice: Wellness Support

Community, care, and a room where kids are always welcome.

SPRING 2026

SAN DIEGO
MESA COLLEGE

CARE • CalWORKs • The Stand
Mental Health Services



STUDENT PARENT HEALING CIRCLE

The healing circle focuses on creating a safe space for student parents. Children are always welcome!

Food will be provided!

For Information & Accommodations
Grace Aumoeualogo
gaumoeualogo@sdccd.edu

DATES THURSDAYS
February 19
March 19
April 23
May 21

Time 3:00pm - 4:30pm

LOCATION
Family Resource Center
LRC, 1st Floor, R113

UC DAVIS

Transfer and Reentry Center



Student Parent Wellness Program

Transfer and Reentry Center • Services • Student Parent Resources •
Student Parent Wellness Program

Your wellness promotes the health of your family!



As student parents, you're extremely busy managing caregiving responsibilities, academic courses, personal situations, and providing for the needs of your families. This program is an opportunity to focus on YOUR WELLNESS!

The UC Davis Student Parent Wellness program aims to nurture student parents' wellbeing by providing prepared meals, nutrition and cooking workshops, supervised children's activities, and a customized fitness class. By having the time and resources to concentrate on your holistic wellbeing, you'll feel centered and balanced in your family and academic life.

What SP support looks like in practice: Family Housing

Housing designed with the whole family in mind



- California State University, Northridge
- University of Michigan
- Jackson College



What SP support looks like in practice: SP cohort models

Belonging by design

Discover HCC | Programs & Courses | Admissions & Aid | Services & Support | Student Life | About Us

Parent Scholars Program



Helping student parents realize their dreams.

As a parent, your college experience is unique as you try to balance the obligations of work, school and family. The Parent Scholars Program (formerly the Career Links Program) can assist you in managing these challenges during the course of a semester by working one-on-one with you to identify and access the resources necessary for academic, career, and employment success.



Making the Invisible Visible: UCLA Parenting Student Summer Transfer Experience

Cherry Lai 35 subscribers | Subscribe | 14 | Share | Ask | Save | Download

What SP support looks like in practice: Family Housing

The village it takes: Nonprofit-campus partnerships putting roofs over student families

Single parent ...and feel like you're struggling?



Succeed with Buckner Family Pathways!

Buckner Family Pathways helps single-parent families like yours complete an educational and/or technical training program.

Contact me today!

Holly Valentine
Hvalentine@buckner.org
936.633.7919



LUFKIN

Hope shines here.®



What we offer:

- Safe, affordable community apartment living
- Access to quality childcare
- Exceptional education, training opportunities
- Case management services
- Free counseling for parents and children

LONG BEACH CITY COLLEGE | About | Academics | Admissions & Aid | Campus Life | Offices | Col

Long Beach City College and Raise the Barr Announce Innovative Partnership to Support Single-Parent Students

Press Release | September 21, 2022

Raise The Barr Foundation: Making Real Impact for Single-Parent Families

February 9, 2026

For single parents pursuing higher education, the path to a degree often comes with challenges far beyond the classroom. Balancing coursework, child care, work, and financial responsibilities can make success feel out of reach. [Raise the Barr Foundation](#) is changing that reality by providing student parents with the resources, stability, and community they need to persist, graduate, and build a better future for their families. Founded in 2016 by a single mother and her son, the organization empowers student parents and aims to change the trajectory of families' lives.

A Critical Implementation Consideration

- While these student parent (SP) supports offer a strong starting point, implementation must be intentional and iterative
 - Center student parent voice
- Ensure supports are informed by lived experiences, not assumptions
- Evaluate against your data
 - Regularly assess whether supports are actually meeting identified needs

A Critical Implementation Consideration

- Balance urgency with reality

We recognize many institutions are in the implementation phase—this work takes time & leveraging what already exists

Use this resource of existing resources tool to:

- Adapt approaches to your campus context
 - Build and strengthen partnerships
 - Elevate existing supports
 - Identify and address gaps

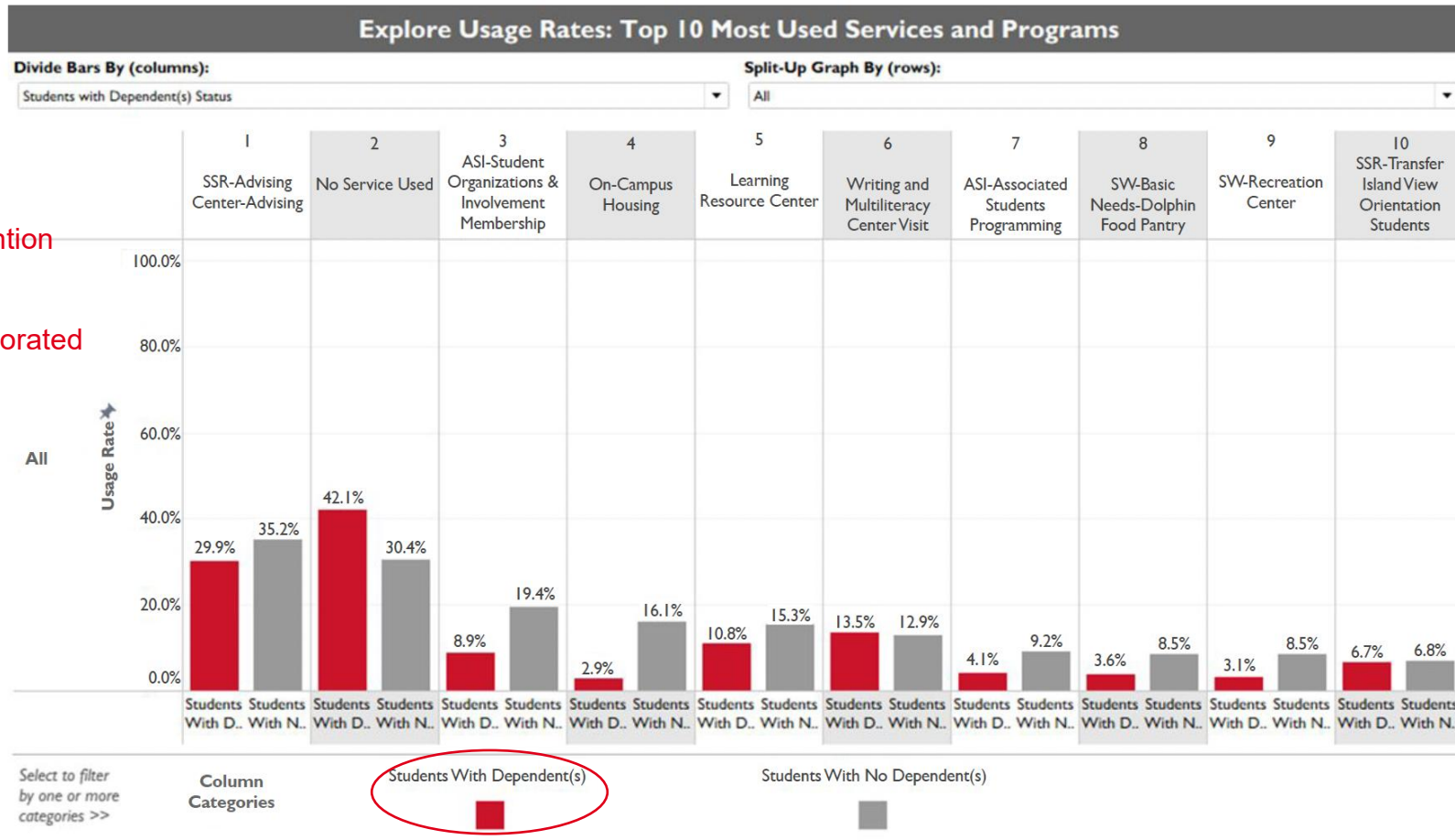
Supporting student parents requires a shared, institutional commitment—one that relieves students from sustaining essential resources on their own & recognizes them as a significant population colleges are responsible for serving.

College Spotlight

Using data to inform resources at colleges: examples from colleges

Example: California State University – Channel Islands

Four-year, public university in Camarillo, CA



SSR = Student Success and Retention

ASI = Associated Students Incorporated

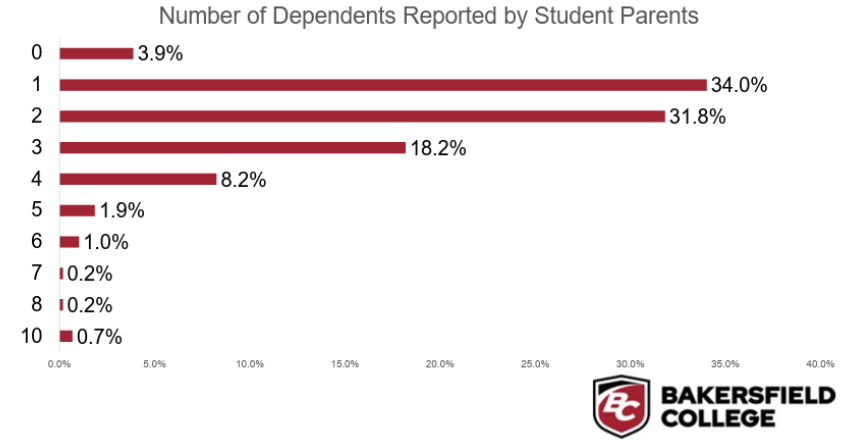
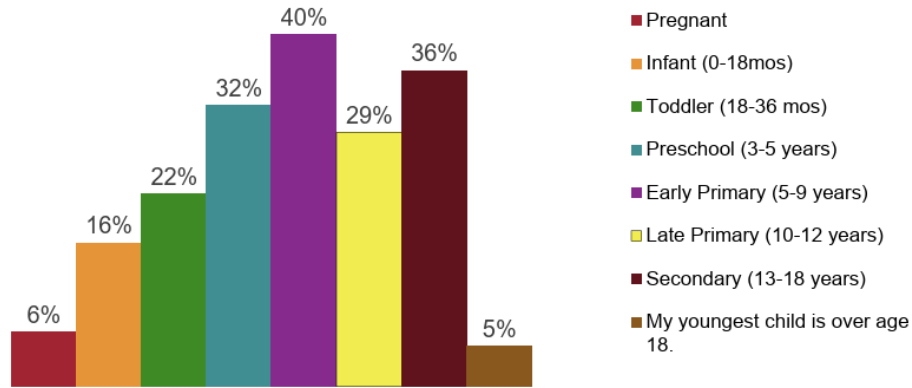
What is most interesting about CSU CI's program usage findings?

What would you do if this were college? What would you recommend?

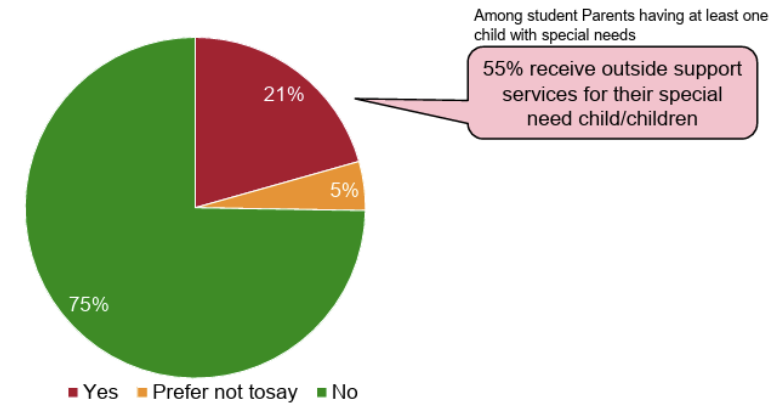
Example: Bakersfield College

Community college in Bakersfield, CA

Age Groups of child/children



Child(ren) with Special Needs



What could or should these results change at your college?

How might knowing these characteristics of your student parents and their children inform change?

Profile of existing resources exercise

D2A activity: Building a profile of existing resources

This activity is adapted from the *Family Friendly Campus Toolkit*

The resource profile is intended to catalogue all resources available to students

You can also note resources that are already planned for the near future

Profile of Existing Resources for the Data-To-Action Campaign for Parenting Students Adapted from the Family Friendly Campus Toolkit

Basic Information

Please fill this in to start.

College:

D2A Team Members Who Participated in Compiling this Profile:

Other People or Sources Consulted:

Date Completed:

Profile

Discuss this as a group and give opportunities for team members to contribute. Add more rows to each table as necessary.

1. List the **targeted college services** for parenting students (e.g., lactation rooms, Title IX supports, student parent centers).

Service Provider or Facility	Description	Where to Find or How to Access	Who Qualifies	Comments
E.g., Lactation rooms	Private spaces with restricted access for lactation or nursing; include outlets, a sink, a chair, and wifi	ABC Building 123 (main campus) DEF Building 456 (south campus) GHI Building 789 (athletic center)	Any student can request access through the form available at XXX.edu or by calling Jane Doe at (222) 555-0000	New room opening in fall 2025 in JKL Building 987 (west campus)

2. List the **general college services** used by parenting students to meet academic or personal needs (e.g., tutoring, counseling, basic needs support, health care, housing, dining).

Service Provider or Facility	Description	Where to Find or How to Access	Who Qualifies	Comments
E.g., Campus health center	Offers pregnancy tests, prenatal care, and specialist/ pediatric referrals	Located at 123 Main Street; hours are Mon-Sat 7:30 AM-6:00 PM	Anyone with student or employee health insurance through the college	Working on a partnership with a local pediatrics practice for information sessions

The resource profile categories

1. College services/facilities on campus targeted for parenting students
2. College services/facilities on campus **not** targeted for parenting students but used by them
3. Key community or public services off campus that are often used by parenting students
4. Financial resources
5. Gathering places
6. Child care options available on or near campus that are realistic for students
7. Partnerships w/ CBOs, Gov't agencies, or others that benefit parenting students
8. Campus policies that apply specifically to or are helpful for parenting students
9. Campus practices that signal inclusion for parenting students
10. Campus data sources for information about parenting students

Breakout Session Activity

1. For 10 minutes, brainstorm a list of **existing resources** that you have seen offered by your college or other colleges in the following categories:

- College services or facilities targeted for parenting students
- College services or facilities **not** targeted for parenting students but used by them
- Key community or public services off campus that are often used by parenting students
- **Have one person write your ideas on your group's whiteboard**

Whiteboard link: tinyurl.com/WAwhiteboard

2. For 10 minutes, discuss:

- What themes and patterns did you see? Did you notice any gaps?
- Did you have any big “a-ha” moments?
- Where did this make you want to dig in deeper?

Large Group Reflections

- What did you learn?
- What themes and patterns did you see? Did you notice any gaps?
- Did you have any big “a-ha” moments?
- Where did this make you want to dig in deeper?
- What questions do you have about data collection or usage?

Extended profile of existing resources if you want to continue documenting at your specific college...

<https://tinyurl.com/WAprofileofexistingres>



What concrete actions can you take with your profile of resources?

Reach out to **potential partners** who you find in your search

Refer students to supports you didn't previously know about

Disseminate profiles on websites or in classrooms/on syllabi to **raise student awareness**

Fix issues you find – broken or outdated websites, errors, missing information

Learn about barriers and inform campus staff so they can **communicate to students what to expect**

Identify gaps and potentially seek resources to address



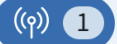
Assess true availability of child care options and other supports

Colleges have used the profile to **identify gaps** and find **new opportunities**


- One school found that their website had **incorrect instructions** for where lactation rooms actually were located
- One school did a full **assessment of local child care availability**
- Another school is preparing a “cheat sheet” version of their profile to live on their website and could be printed and **shared with students**
- Many identified **links to resources** that were buried on webpages and hard to see
- A school found a local organization that assists with educational goal-setting, registering for classes, applying for financial aid, etc. **They will be reaching out to explore a partnership**

Deep-Dive into One Resource: Child Care

poll: What types of care for children are offered at Washington-based college?



 Edit

Show Choices Show Responses Lock Show Correctness



Home



Polls



Reports

Polls

My Polls

Trash

Add Folder

New Poll

Start With AI



1 Selected

Insert Slides



Archive Responses

Duplicate

Trash

Move



College Student Child Care Needs
Survey
3 Questions

1

Mar 29, 2026
at 9:23pm

Mar 31, 2026
at 10:57am



Informal poll: What types of care for children are offered at Washington-based college?



What ages of children are served by your college or a formal child care partner?



What are barriers to offering more child care resources for student parents?



What are barriers to offering more child care resources for student parents?

0 0



Awaiting first audience response...

Child Care for Colleges Toolkit – Preliminary Findings

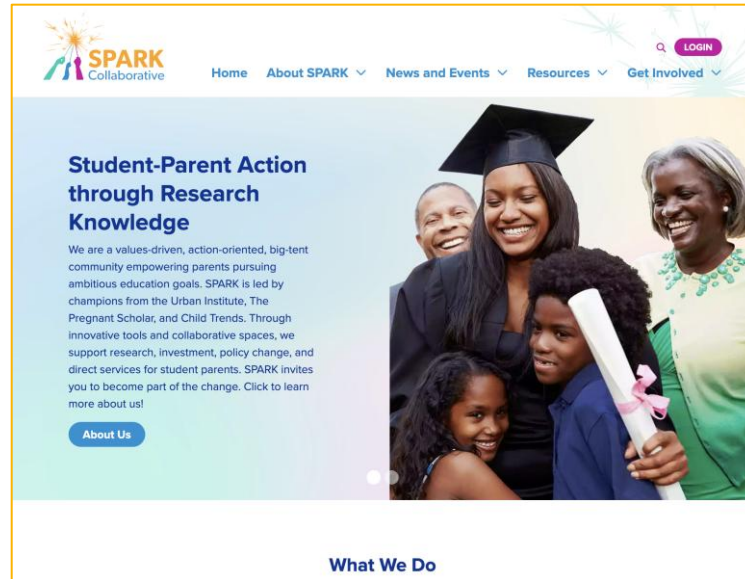
- More buy-in from leadership if child care offerings are part of an educational pathway for ECE programs
- Many funding sources and structures are often context-specific (e.g., legislature-supported funding in OR, state payroll tax in Vermont), but there are many sources
- Staffing models are crucial to consider and including students is helpful (i.e., ECE program students, work study students)
- Toolkit for colleges coming this fall...

Opportunity in WA State:

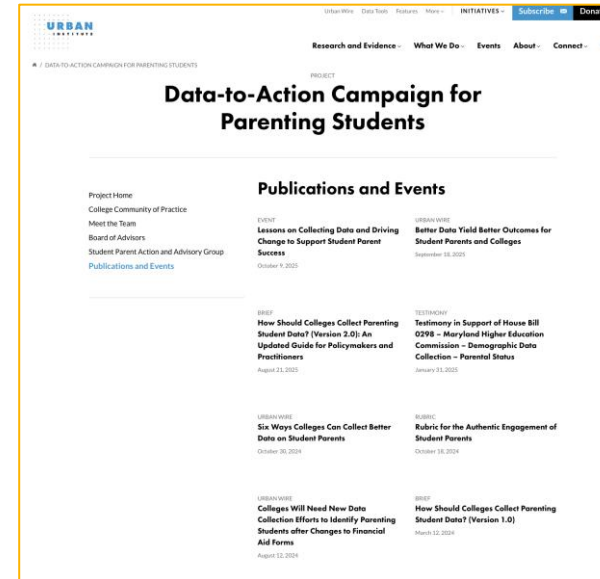
- Insight from webinar 1: Linking student parent data to child care is an important opportunity
- How could data support child care offerings for student parents?
- Who is already connecting data about student parents to child care? Quantitative or qualitative?

Resources

Resources



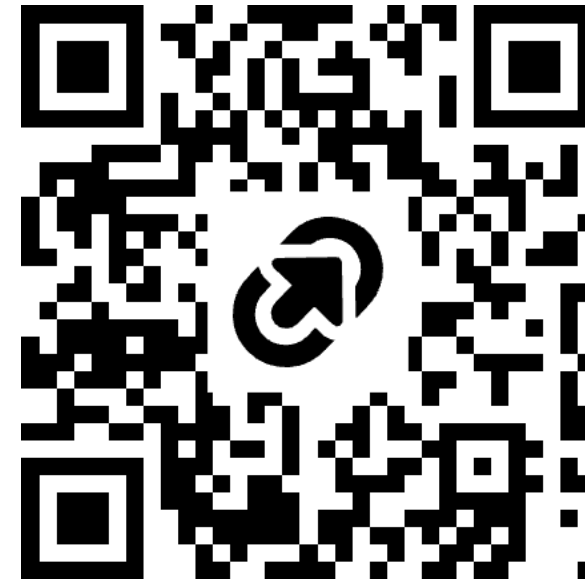
SPARK Collaborative
studentparentaction.org



Data-to-Action Campaign
urban.org/projects/data-action-campaign-parenting-students

Share your Feedback and Support Request

As we end,
please complete this
survey and share how
we can support you.



tinyurl.com/WaSpWebinar2

*Thank you for attending and
please register for the next webinar!*

Ami Magisos
amim@wsac.wa.gov

Kimberly Salazar
ksalazar@urban.org

Kate Westaby
kwestaby@urban.org