



Western Interstate Commission  
For Higher Education

# SOUTHEAST KING COUNTY HIGHER EDUCATION NEEDS ASSESSMENT

## Advisory Committee Meeting III

COVINGTON, WASHINGTON

OCTOBER 6, 2016

# AGENDA

- Welcome & Introductions (9.00 – 9.15 AM)
- Meeting Goals (9.15 – 9.20 AM)
- Project Status Update (9.20 – 9.30 AM)
- Preliminary Quantitative Data (9.30 – 10.15 AM)
- Break (10.15 – 10.30 AM)
- Qualitative Data (10.30 – 11.00 AM)
- Features & Principles Guiding the Final Recommendations (11.00 – 11.45 AM)
- Next Steps (11.45 AM – 12.00 PM)

# WELCOME

---

Washington Student Achievement Council

# INTRODUCTIONS

---

Advisory Committee

# MEETING GOALS

- Provide project status update
- Present preliminary quantitative data
- Present qualitative data (stakeholder interviews)
- Present features and principles that will guide the final recommendations
- Confirm upcoming dates and locations

# PROJECT STATUS UPDATE

---

# UPDATED PROJECT TIMELINE

	August	September	October	November	December
Stakeholder Interviews	Active		Active		
Data Collection	Active				
Summarize & Interpret Findings		Active	Active		
Draft Preliminary Report		Active	Active		
Incorporate Feedback into Preliminary Report			Active	Active	
Create Final Report				Active	
Incorporate Feedback into Final Report					Active

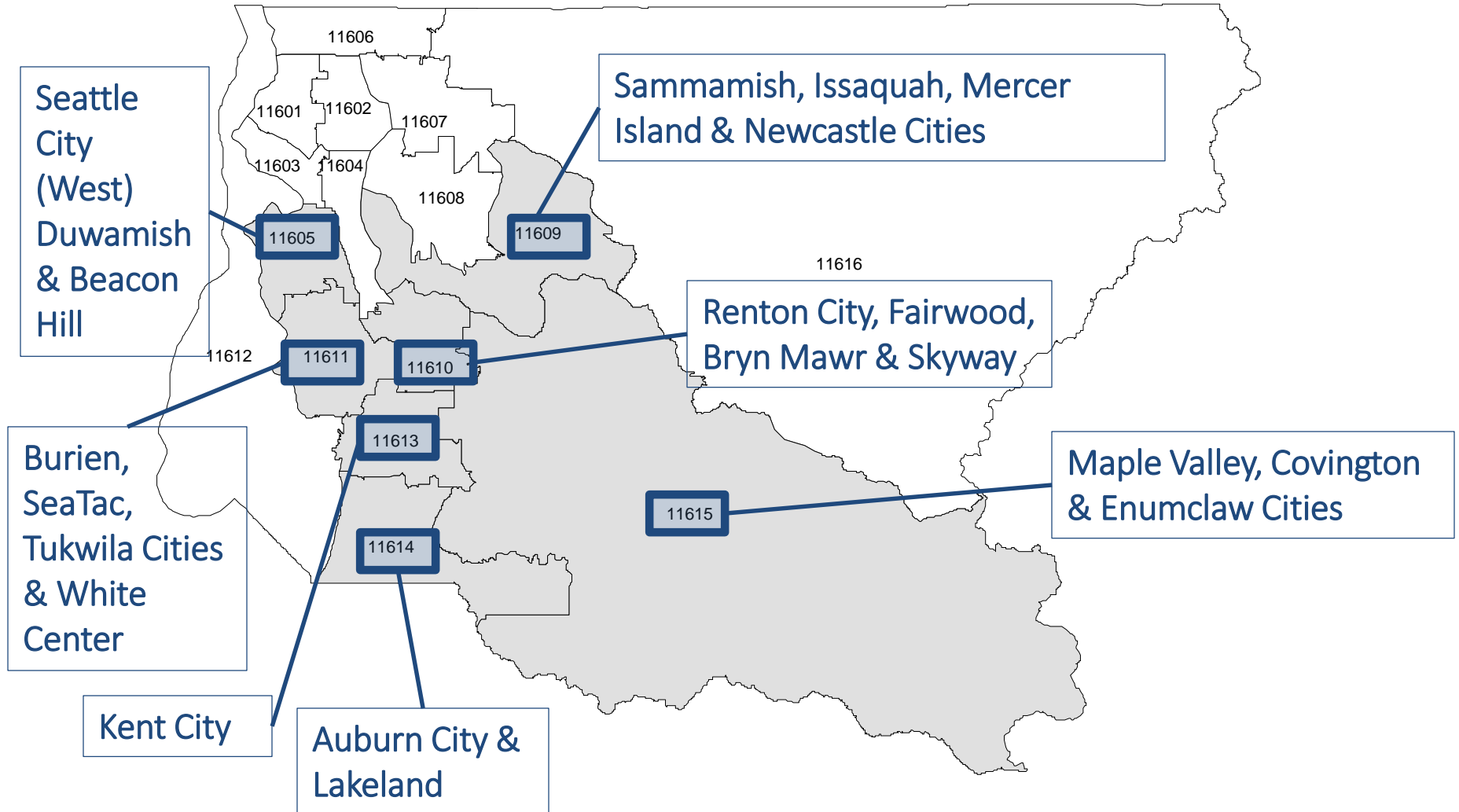
# DATA

---

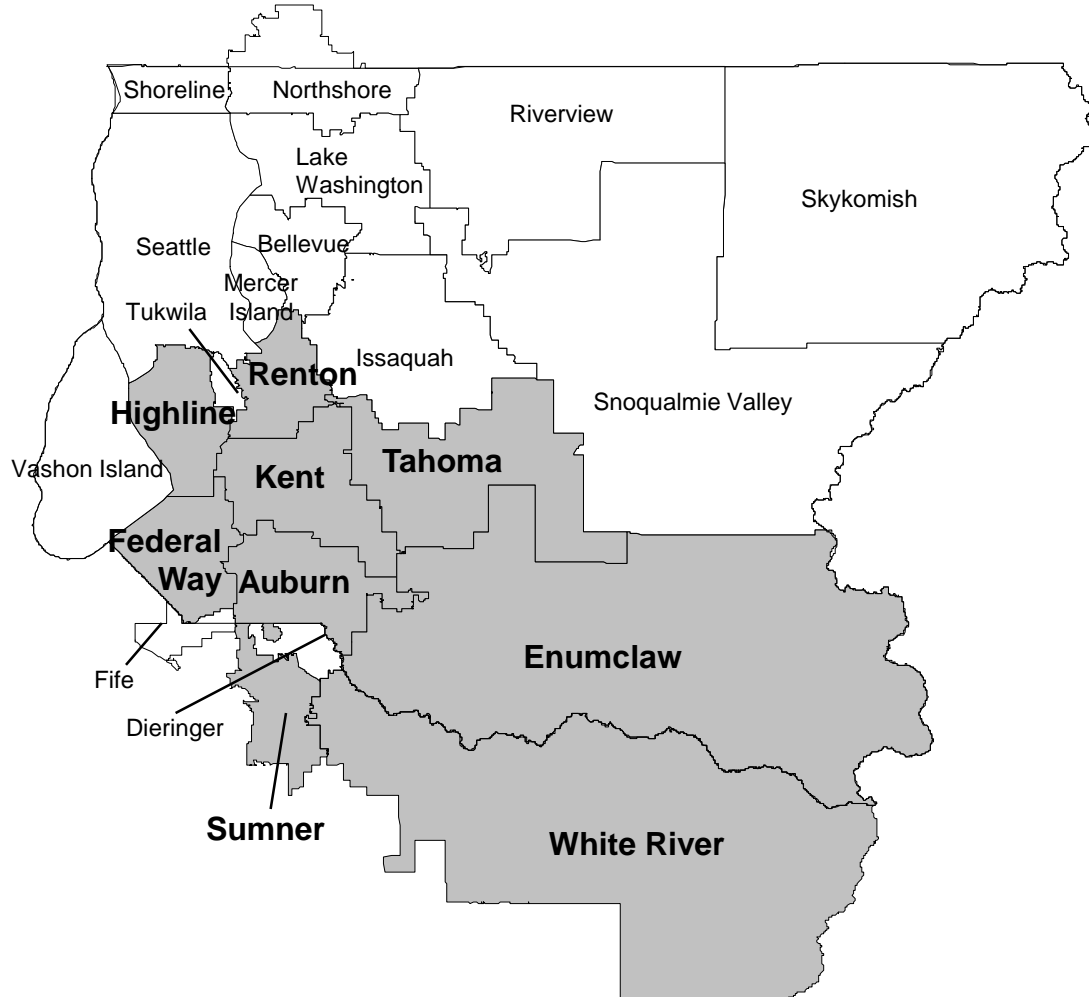
## Preliminary Quantitative Data



# KING COUNTY PUBLIC USE MICRODATA AREAS (PUMAS)

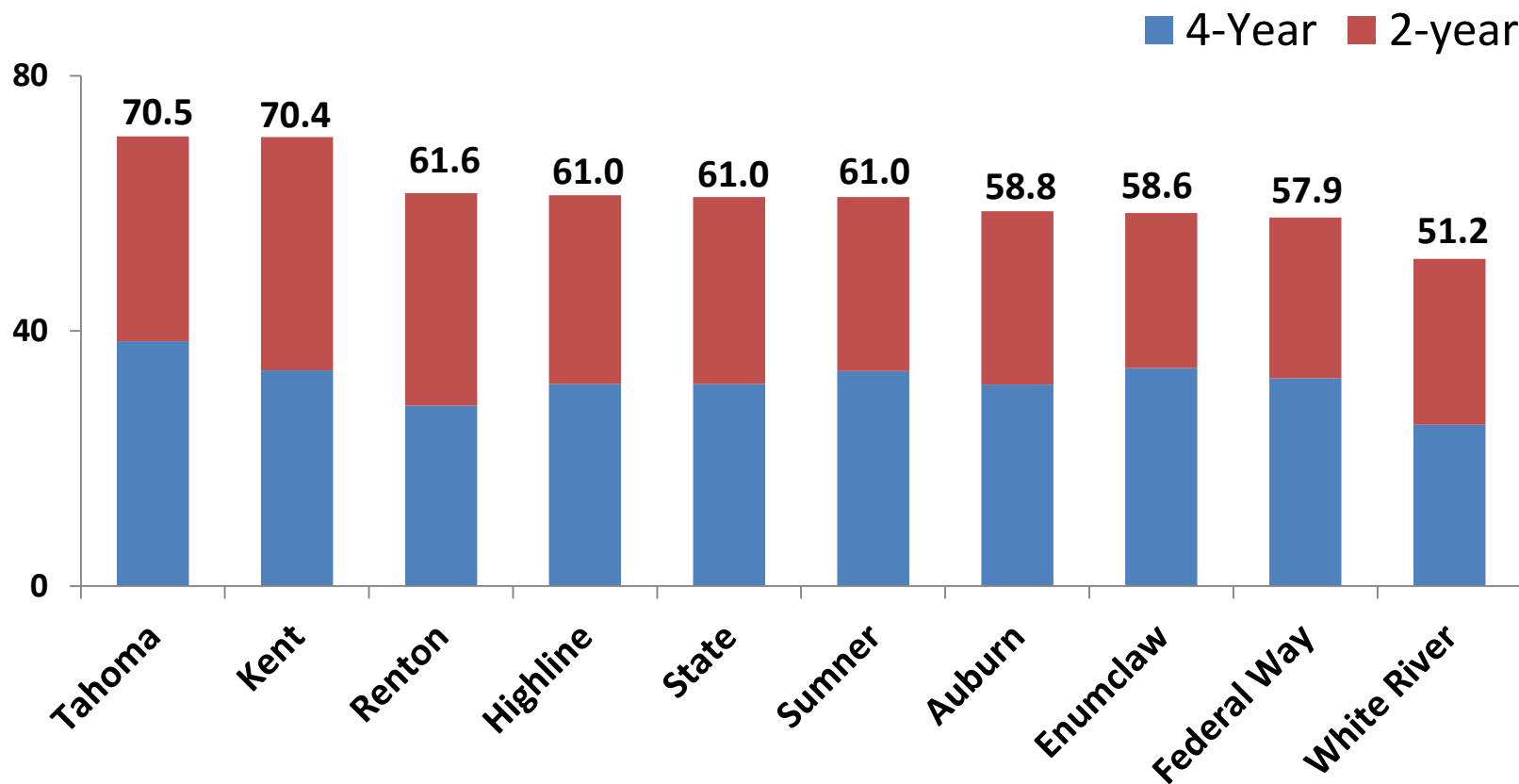


# KING COUNTY SCHOOL DISTRICTS



Source: U.S. Census Bureau, 2016 Tiger/Line Shapefiles.

# KING COUNTY HIGH SCHOOL GRADUATE COLLEGE PARTICIPATION RATES BY DISTRICT & SECTOR, 2014



Source: State of Washington, Office of Financial Management., Education and Research Data Center  
<http://www.ercd.wa.gov/student-and-school-data/transition-beyond-high-school/high-school-feedback-reports>

# AUBURN SCHOOL DISTRICT - HIGH SCHOOL GRADUATE COLLEGE-GOING COUNTS BY INSTITUTION, 2014

Institution	College-Going Count	Percent	Cumulative Percent
Green River Community College	188	41.7	41.7
University of Washington	79	17.5	59.2
Washington State University	34	7.5	66.7
Central Washington University	30	6.7	73.4
Highline Community College	30	6.7	80.0

# ENUMCLAW SCHOOL DISTRICT - HIGH SCHOOL GRADUATE COLLEGE-GOING COUNTS BY INSTITUTION, 2014

Institution	College-Going Count	Percent	Cumulative Percent
Green River Community College	51	41.5	41.5
Central Washington University	17	13.8	55.3
University of Washington	16	13.0	68.3
Washington State University	11	8.9	77.2
Western Washington University	8	6.5	83.7

# FEDERAL WAY SCHOOL DISTRICT - HIGH SCHOOL GRADUATE COLLEGE-GOING COUNTS BY INSTITUTION, 2014

Institution	College-Going Count	Percent	Cumulative Percent
Highline Community College	248	36.8	36.8
University of Washington	187	27.8	64.6
Washington State University	71	10.5	75.2
Green River Community College	38	5.6	80.8

# HIGHLINE SCHOOL DISTRICT - HIGH SCHOOL GRADUATE COLLEGE-GOING COUNTS BY INSTITUTION, 2014

Institution	College-Going Count	Percent	Cumulative Percent
Highline Community College	175	32.1	32.1
University of Washington	128	23.4	55.5
South Seattle Community College	80	14.7	70.1
Washington State University	44	8.1	78.2
Western Washington University	27	4.9	83.2

# KENT SCHOOL DISTRICT - HIGH SCHOOL GRADUATE COLLEGE-GOING COUNTS BY INSTITUTION, 2014

Institution	College-Going Count	Percent	Cumulative Percent
Green River Community College	271	28.9	28.9
University of Washington	167	17.8	46.7
Highline Community College	133	14.2	60.9
Bellevue Community College	99	10.6	71.4
Washington State University	80	8.5	80.0



# RENTON SCHOOL DISTRICT - HIGH SCHOOL GRADUATE COLLEGE-GOING COUNTS BY INSTITUTION, 2014

Institution	College-Going Count	Percent	Cumulative Percent
Bellevue Community College	160	32.6	32.6
University of Washington	110	22.4	55.0
Renton Technical College	79	16.1	71.1
Washington State University	32	6.5	77.6
Western Washington University	18	3.7	81.3

# TAHOMA SCHOOL DISTRICT - HIGH SCHOOL GRADUATE COLLEGE-GOING COUNTS BY INSTITUTION, 2014

Institution	College-Going Count	Percent	Cumulative Percent
Green River Community College	103	37.3	37.3
Bellevue Community College	38	13.8	51.1
University of Washington	36	13.0	64.1
Washington State University	34	12.3	76.4
Western Washington University	21	7.6	84.1

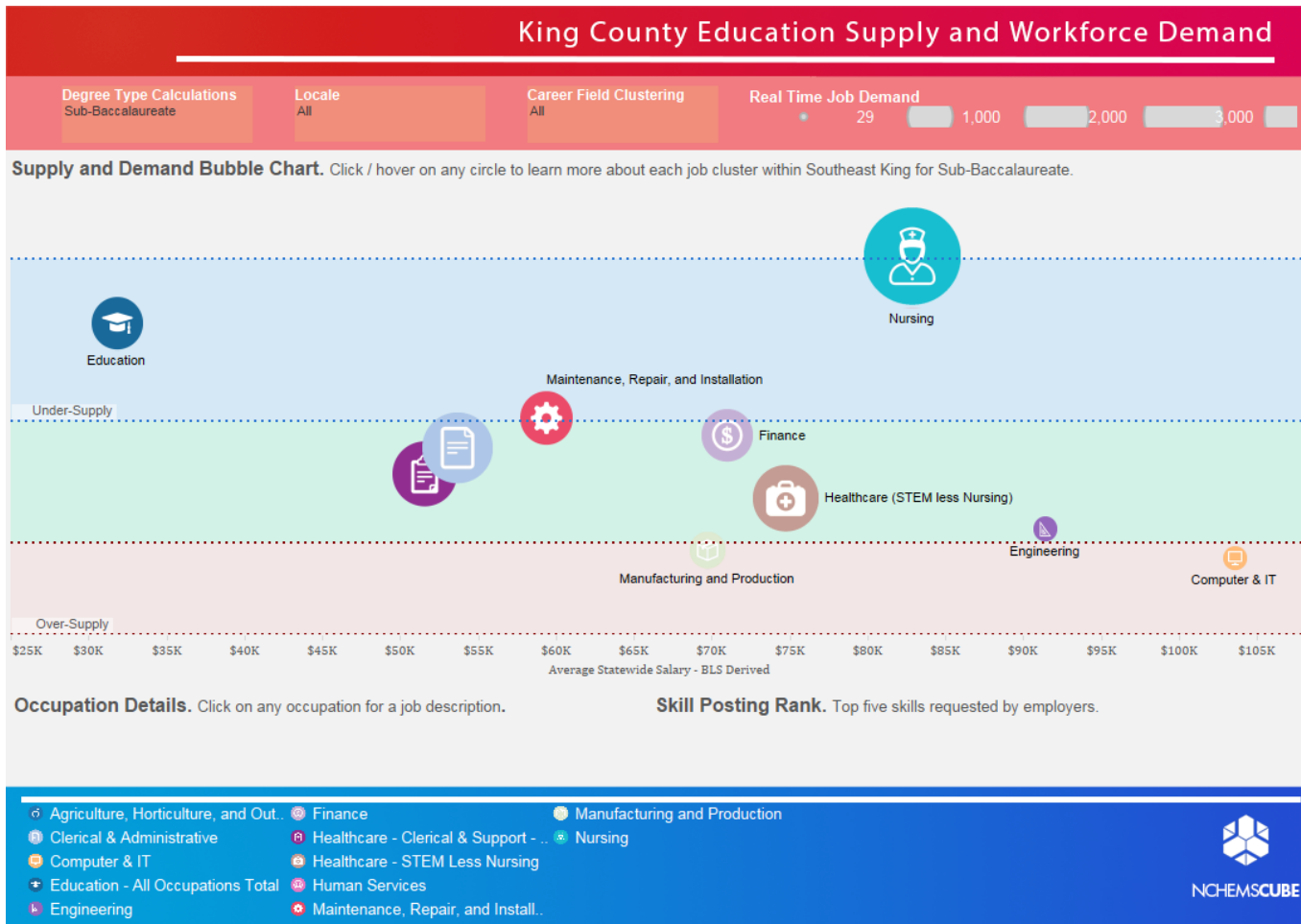
# SUMNER (PIERCE COUNTY) SCHOOL DISTRICT - HIGH SCHOOL GRADUATE COLLEGE-GOING COUNTS BY INSTITUTION, 2014

Institution	College-Going Count	Percent	Cumulative Percent
Pierce / Fort Steilacoom	45	16.8	16.8
Washington State University	44	16.4	33.2
Green River Community College	35	13.1	46.3
Pierce / Puyallup	35	13.1	59.3
University of Washington	27	10.1	69.4
Western Washington University	18	6.7	76.1
Central Washington University	14	5.2	81.3

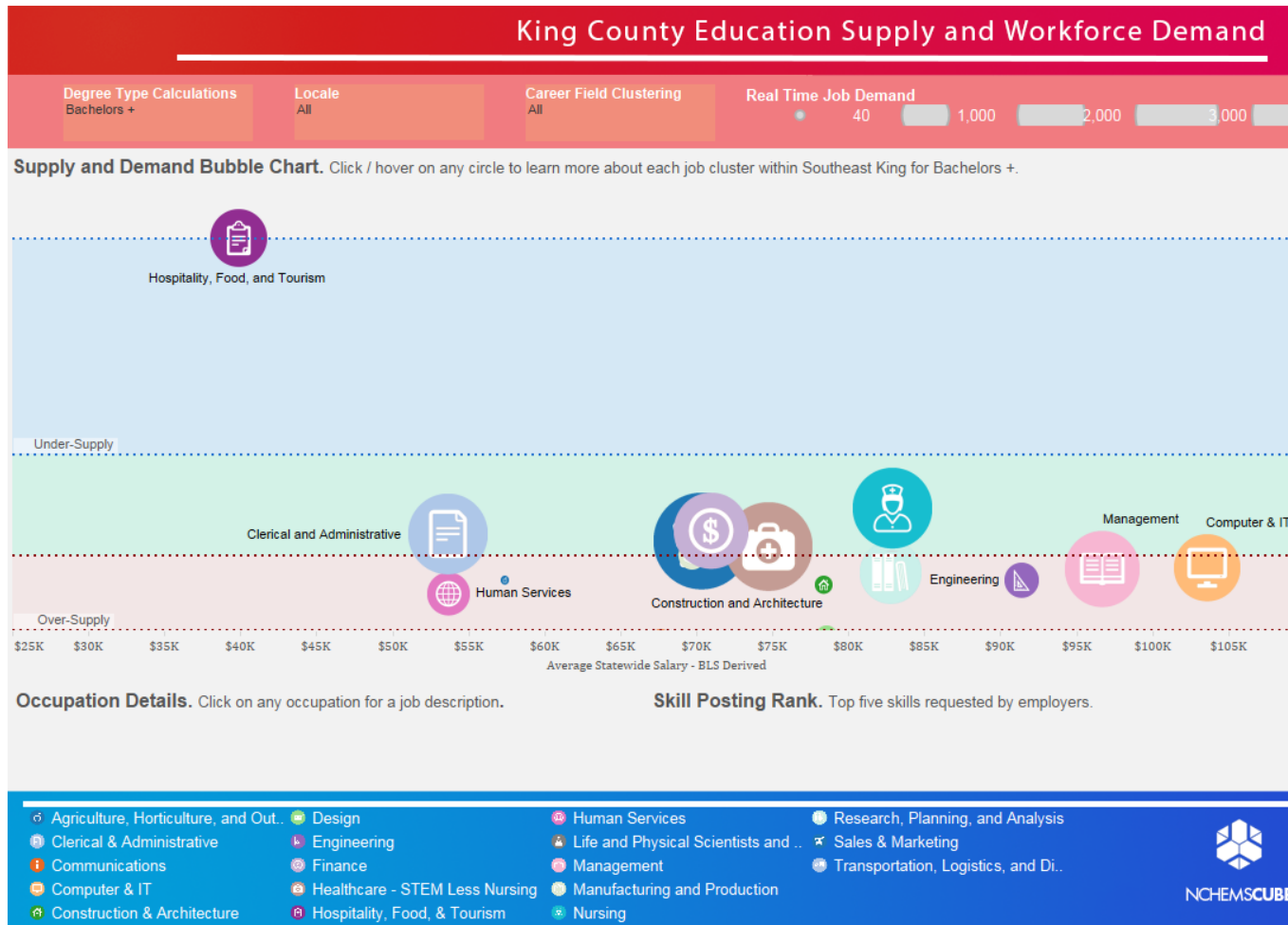
# WHITE RIVER (PIERCE COUNTY) SCHOOL DISTRICT - HIGH SCHOOL GRADUATE COLLEGE-GOING COUNTS BY INSTITUTION, 2014

Institution	College-Going Count	Percent	Cumulative Percent
Pierce / Puyallup	21	17.8	17.8
Green River Community College	19	16.1	33.9
Eastern Washington University	16	13.6	47.5
Pierce / Fort Steilacoom	16	13.6	61.0
Western Washington University	10	8.5	69.5
Central Washington University	8	6.8	76.3
University of Washington	7	5.9	82.2

# SOUTH EAST KING COUNTY SUPPLY & DEMAND SUB-BACCALAUREATE



# SOUTH EAST KING COUNTY SUPPLY & DEMAND BACCALAUREATE



# DATA

---

Qualitative Data

# STAKEHOLDER INTERVIEWS - SEPTEMBER

Government	Education	Employer/Workforce
<b>Representative Pat Sullivan</b>	<b>Angel Reyna</b> (Renton Technical College)	<b>Moriah Martin</b> (Kent School District )
<b>Senator Joe Fain</b>	<b>Deb Casey Powell</b> (Green River Community College)	
	<b>Leslie Moore &amp; Byron Ford</b> (Green River Kent Campus)	
	<b>Jenée Myers Twitchell</b>	



# STAKEHOLDER INTERVIEWS - OCTOBER

Government	Employer/Workforce
<b>Richard Hart</b> (Covington Community Development Director)	<b>Kevin Hull</b> (MultiCare)
<b>Dan Catron</b> (Enumclaw Associate Planner)	<b>Chelsea Orvella &amp; Stan Sorscher</b> (SPEEA, IFPTE Local 2001)

# STAKEHOLDER INTERVIEWS

## Still Pursuing

**Valley Medical Center – Covington Clinic**

**Monty Anderson** (Seattle Building Trades Union)

**Todd Mitchell** (Heat and Frost Insulators and Firestop Containment Workers)

**Biz IT Pros**

**Key Bank - Covington**

**Laura Philpot** (Maple Valley Community Development Director)

**Lori Cloud** (Tahoma School District)

**Stephanie Berryhill** (Enumclaw School District)

**Debbie Leighton** (Auburn School District)

# STAKEHOLDER INTERVIEWS

---

# STAKEHOLDER INTERVIEWS

---

Themes & Undercurrents

# THEMES

- Traffic (Length of Commute)
  - No solution on the horizon
- Sense of Unmet Need in Certain Fields
  - Nursing
  - Teaching
  - IT
- Disconnects Between Sectors
  - Higher Education
  - K-12
  - Community
  - Employers

# THEMES

- Default Thinking Focused on Traditional Students
- Desire for Area Residents to Earn a Living Wage
- Providers Require Demonstration of Demand

# UNDERCURRENTS

- Skepticism of Distance Education
- Competition Between Providers
- Economic Development as a Driver
- Visible Higher Education Presence is Important to Certain Groups

# PRINCIPLES & FEATURES

---

Guiding the Final Recommendations



# PRINCIPLES

- Demand is for provision of service, not a new institution
- Local response needs to be driven by local demand, not institutional supply
- Solution must be able to respond to changing workforce demands
- Travel considerations make local access important

# FEATURES

- Flexible solution
- Distance/hybrid options should be considered
- Adult students are likely to be primary audience
- Not limited to one provider
  - However, one provider per program
- Provision of appropriate support services will be key to success

# NEXT STEPS

- Upcoming activities
  - Data analysis (October)
  - Final (phone) stakeholder interviews (October)
  - Draft preliminary report (October)
  - Present to Washington Student Achievement Council (11/9/16)

# NEXT STEPS

- Meeting dates
  - **October 26, 2016** – To be determined
  - **November 18, 2016** – City of Covington Council Chambers
- Meeting locations
  - **To be determined** – 10/26/16
  - **City of Covington Council Chambers** – 11/18/16