

College Bound Scholarship Program



House Higher Education Committee
February 7, 2013

College Bound Scholarship goal: improve high school graduation and college enrollment rates for low-income students.

- Offers an **early promise** of financial aid to qualifying 7th and 8th graders
 - Student is eligible for free or reduced-price lunch (FRPL), receives basic food/TANF, or meets the income standard.
 - Student was in foster care.
- Combines with **State Need Grant** and other state financial aid to cover tuition (at public college rates), plus a small book allowance.

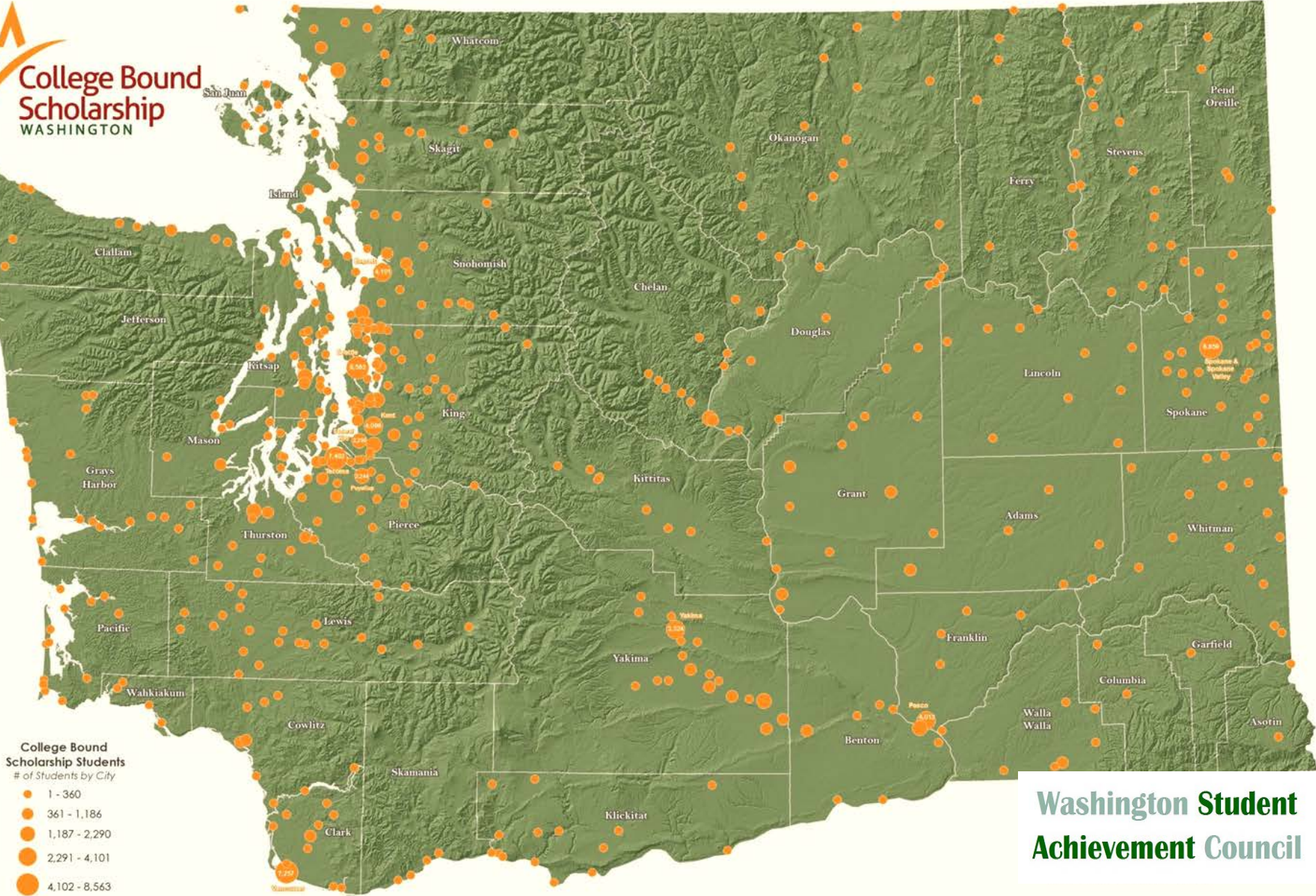


Online application, and paper applications translated into 10 languages, with Student Pledge:

- **Graduate** from high school with a minimum cumulative 2.0 GPA or higher.
- Be a good citizen with **no felony convictions**.
- **Apply for admission** at an eligible institution.
- File the **FAFSA to determine income eligibility** in the senior year to receive the scholarship in college.



College Bound Scholarship Students



Washington Student
Achievement Council

Growth in the College Bound Scholarship Program 2007 to 2013								
Cohort	1	2	3	4	5	6	7	Total All Years
Expected High School Graduation Year	2012	2013	2014	2015	2016	2017*	2018*	
Eligible Free/Reduced Price Lunch Program Students	28,093	28,600	29,856	30,549	31,923	36,394	N/A	185,415
Total College Bound Scholarship Applicants	15,862	15,906	20,708	23,116	24,960	19,721	6,798	127,071
% of Total Eligible Students	56%	56%	69%	76%	78%	TBD	TBD	
Seniors filing FAFSA	9,600							

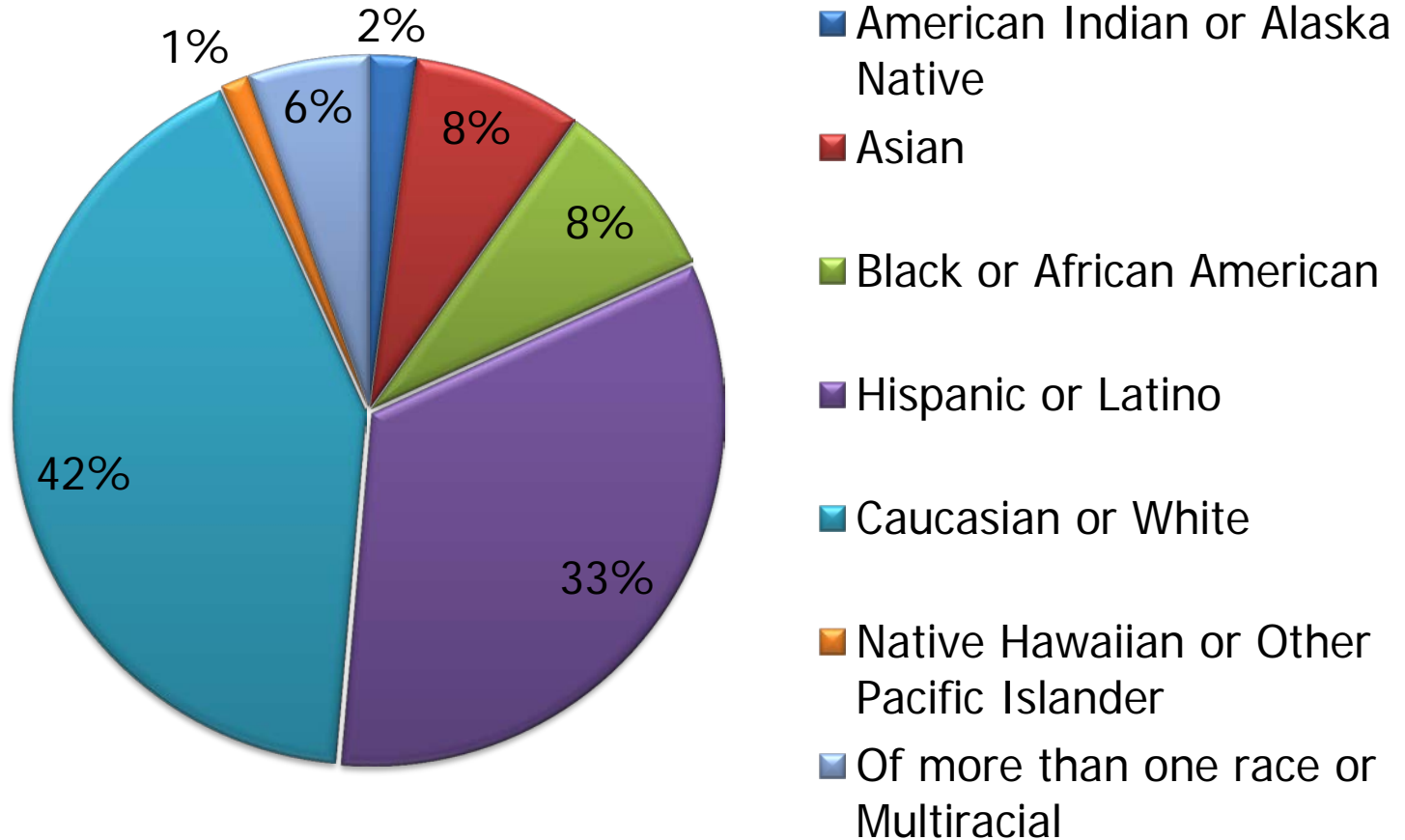
* Preliminary numbers as the cohort deadline has not passed

N/A = Data currently not available from OSPI

- Students apply in middle school, by June 30 of 8th grade year.
- Number of eligible students and percentage who apply increases each year.
- Number of 7th graders who apply increases each year.

- The Student Achievement Council **exchanges information** twice a year with the Office of the Superintendent of Public Instruction (OSPI) to monitor current school, grade level, GPA, graduation, and more.
- Information is provided via **secure web portal** to schools, and to select private non-profit organizations, including GEAR UP and the College Success Foundation, to provide support and services.
- **Foster youth** in grades 7-12 are automatically enrolled for the College Bound Scholarship via a data exchange with Department of Social and Health Services (DSHS).
- The Council matches College Bound Seniors with the **FAFSA** (Free Application for Federal Student Aid).
- Campuses can upload files to **identify College Bound Scholarship students**.
- Campuses report **student award data** four times annually.

Race and Ethnicity Data for Complete Applications



95,539 Records
as of Dec. 2012

Comparison of Grade Point Averages

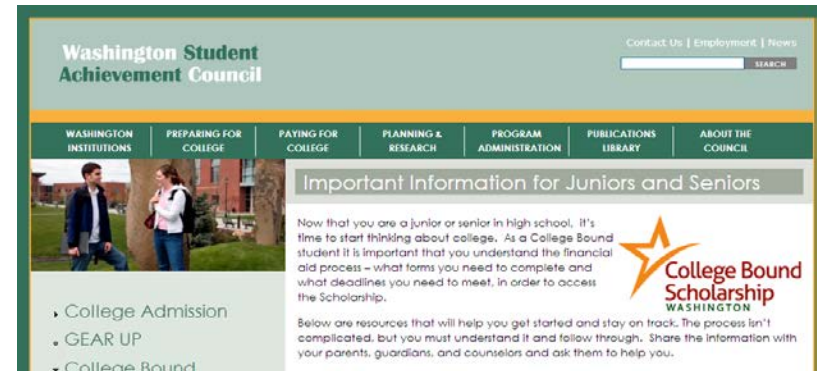
College Bound students have higher cumulative grade point averages than their peers who also are low-income but are not enrolled in College Bound.

2012 Cohort	Total Students	Cumulative GPA 2.0+	% of total
Non-FRLP Students	47,388	37,196	78%
CBS Students*	12,071	8,915	74%
Other FRLP Students	22,264	13,180	59%

*CBS records matched with OSPI data.

Website: www.CollegeBound.wa.gov

Facebook: I am College Bound



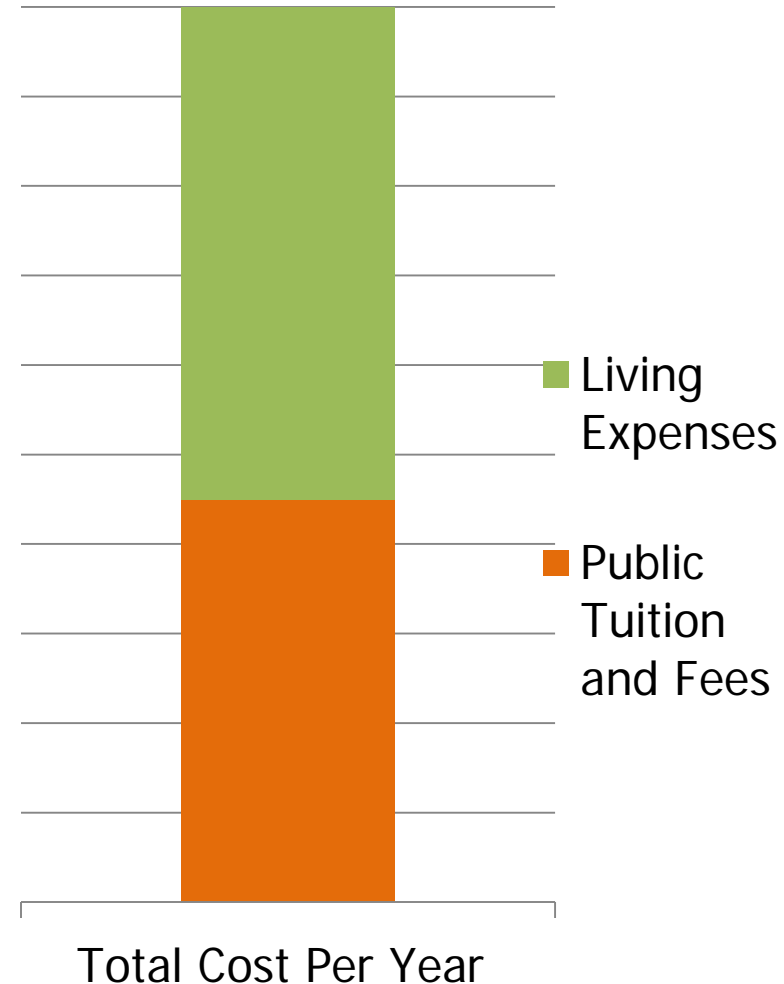
Blog: collegeboundwa.edublogs.org



- Students must file the **FAFSA every year** in college.
 - 65% of median family income
 - February 1st is the FAFSA priority filing date
 - If ineligible in a given year eligibility will be re-evaluated in subsequent years
- Students must **apply, be admitted**, and **enroll** within one academic year of high school graduation.
 - The 2.0 is a minimum and admission to a four-year institution will be higher than 2.0 (GED does not qualify)
- Students must **maintain college's Satisfactory Academic Progress**.
- A student who receives the award and withdraws from classes, may **owe a repayment** to the program.
- College Bound is a **four-year scholarship** that must be used within five years of high school graduation.
- Students must be citizens or eligible non-citizens.

The College Bound Scholarship amount varies for each student

- Tuition rates vary based on type of school attending.
- Maximum award (from **\$4,400 to \$11,900**) is based on tuition, fees, and \$500 book allowance.
- Other state financial aid awarded is subtracted.
 - State Need Grant, Passport to College Scholarship, Opportunity Scholarship, and SBCTC Opportunity Grant



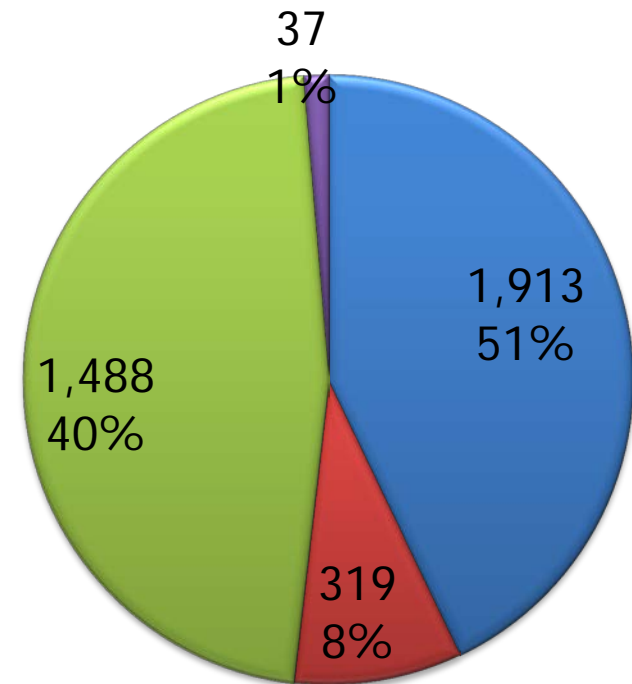
- **Changes to SNG state policies** increase CBS awards.
- **Changes to campus SNG practices** increase CBS awards.
- **More students being admitted to four-year institutions**, which have higher award amounts.
- **Tuition increases** have affected CBS costs:
 - Since 2007, tuition has increased 49% and 82% at public two- and four-year institutions, respectively.
 - Only one initial GET investment made – \$7.4 million.
 - SNG funding is not covering 30% of eligible students.
- **CBS will cover full tuition awards** for some students, rather than “gap fill” as originally intended.

2012 Class = 15,861 students

- 9,657 filed the FAFSA
- 8,259 verified graduated/2.0 GPA
- 6,757 currently enrolled based on preliminary fall data (next report due February 8, 2013)
 - 3,793 have College Bound Scholarship awards as reported by postsecondary institutions, *(preliminary fall data)*
 - 2,964 enrolled but not awarded
 - ◆ Students may have state aid in excess of maximum award
 - ◆ Income may exceed maximum
 - ◆ Enrolled in non-SNG institution

CBS Enrollments by Sector

Based on preliminary data for Fall 2012



■ Public 4 ■ Private 4 ■ CTC ■ Priv Career