

THE ROADMAP

2015 UPDATE ON WASHINGTON STATE'S ATTAINMENT GOALS

WASHINGTON'S GOALS FOR 2023:

BUT IN 2013:



of adults* will have a high school diploma or equivalent.



of adults had a high school diploma or equivalent.



of adults will need a postsecondary credential or degree.



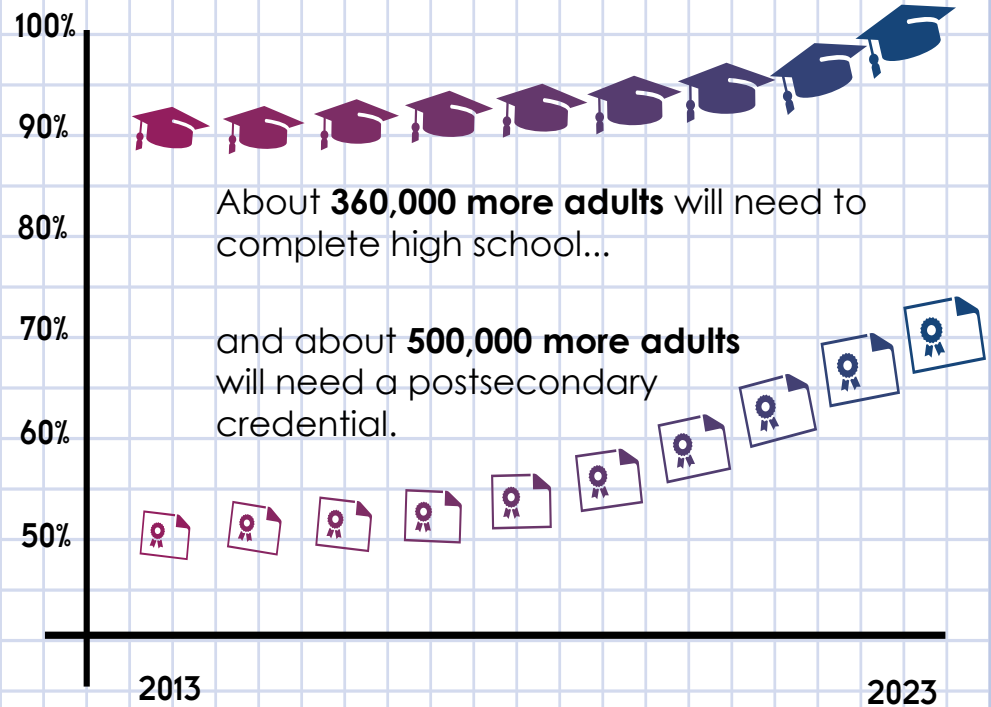
of adults had a postsecondary credential or degree.

Both high school and postsecondary attainment levels increased only one percentage point between 2011 and 2013.

*Throughout this document, the term *adults* refers to those aged 25–44, unless noted otherwise.

Overall attainment gains are inadequate to meet the state's goals by 2023.

To keep pace with population growth and workforce demand:



About **360,000 more adults** will need to complete high school...

and about **500,000 more adults** will need a postsecondary credential.

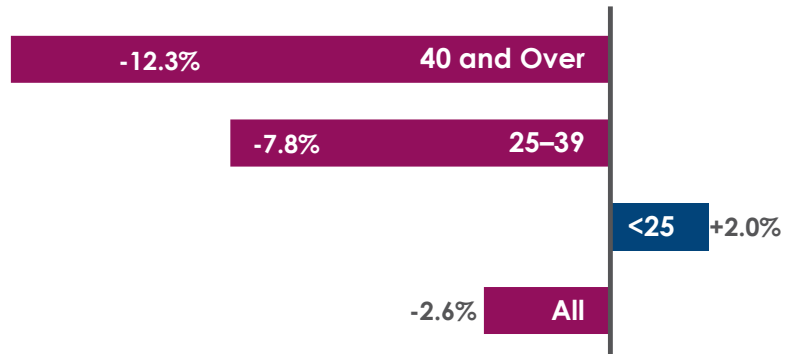
A business-as-usual approach will not meet the needs of Washington's growing and dynamic economy.

Success depends on serving populations we have not adequately reached within our education system.

Roughly 700,000 Washington adults aged 17–54 have earned some college credit, but haven't completed a degree.

- Two out of three of these adults have a year or more of college credit, but don't have a degree.
- Earnings remain stagnant until workers earn their associate degree.
- Enrollments of students aged 25 years and older declined by almost 14,000 during the reporting period.

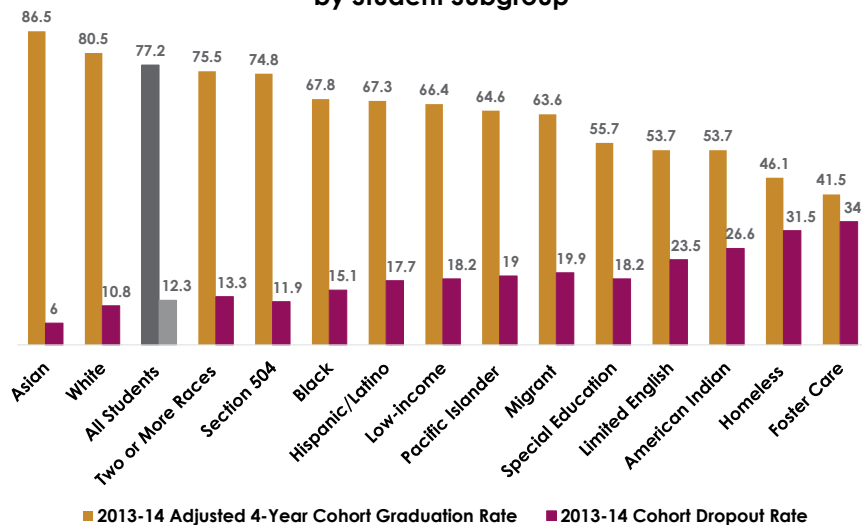
Percent Change in Enrollment by Age Group From 2011 to fall 2013



The fastest growing student populations are historically underserved in K-12 and underrepresented in higher education.

- Although Hispanic/Latinos are about 13% of Washington's adult population, they are almost 50% of the adult population that hasn't completed high school.
- African Americans are 4% of Washington's adult population, but they account for only 2.8% of adults with an associate degree or higher.

2013-14 Four-Year Adjusted Cohort Graduation and Dropout Rates by Student Subgroup



Stay tuned.

The Council will submit the 2016 Strategic Action Plan, proposing resources and strategies needed to increase educational attainment in December 2016. Find the Council's 2016 legislative priorities at wsac.wa.gov/legislative-work. **Read the complete 2015 Roadmap report at wsac.wa.gov/2015-roadmap-update.**